

Hopper Feed Silos

For all your Feed Storage and Delivery Needs



Top lid opening system allows the silo to be opened, closed and locked from the ground. The lid opens full 180° saving interference with truck filling auger. Roof is completely sealed



design to reduce moisture penetration and reinforcing ribs at each roof seam for added strength and rigidity. Galvanised rings are factory roll-formed with deep corrugation and panel curvature.



Unique roll-formed 6-bend legs, heavy galvanised with "W" design more resistant than other "U" design and painted legs used from competitor's silos.



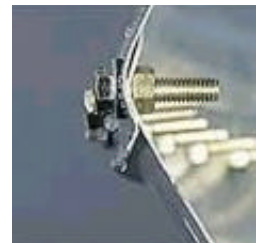
Also available optional accessories: Pneumatic filling-kits with pre-punched roof panels for easy assembling, Hopper Valves allowing easy access feed for manual discharge and Optional Feed Windows can be added to sidewall or bottom hopper for easy inspection during filling or discharge.



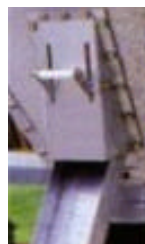
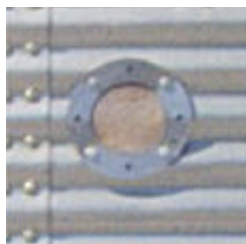
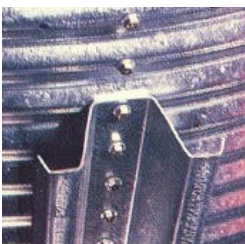
A unique non interfering, safety rail and sectional fully side ladder with safety cage, skid reducing rungs, provide solid access to the top of silo. Ladder could be installed in one of the preferred four legs.



Drip lid water deflection design is one-of-kind, roll formed bottom sheath edge. It forces water away from the hopper and lower boot area, giving complete weather protection and insulation.



Hopper bottom is provided with a sure-fit collar adapter for all 444 mm. AugerFlex unloading accessories. Height from collar to ground is 100 cm. to provide easy hopper cleaning access.

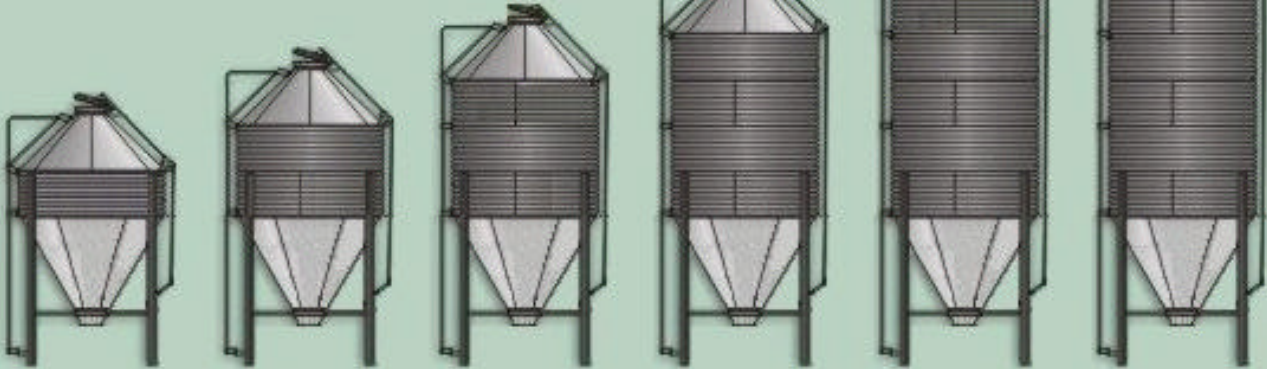


Avitech Systems

Partida Miralbó 116 • 25660 Alcoletge (Lleida)-SPAIN
Tel: +34-973-196029 • Fax: +34-973-196584
E-Mail: avitechsystems@eresmas.com

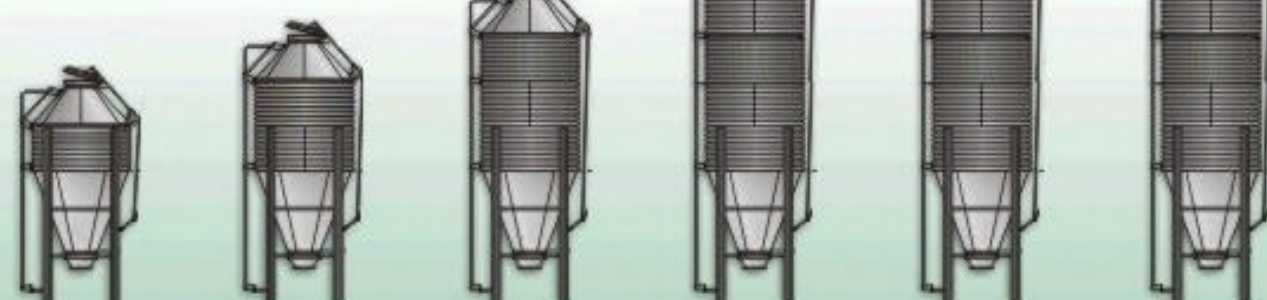
Three Diameters, Eighteen Different Models

**2,55 meter
Diameter
60° Cone**



BM-10-13 13,56 m ³ - 5,7 ton 4,30 m height	BM-20-16 15,78 m ³ - 8,3 ton 5,20 m height	BM-30-18 18,00 m ³ - 10,9 ton 6,10 m height	BM-40-22 22,36 m ³ - 13,4 ton 7,00 m height	BM-50-26 26,62 m ³ - 16,0 ton 7,80 m height	BM-60-31 31,00 m ³ - 18,6 ton 8,80 m height
--	--	---	---	---	---

**2,30 meter
Diameter
67° Cone**



BM-10-07 7,60 m ³ - 4,5 ton 4,40 m height	BM-20-11 11,08 m ³ - 6,6 ton 5,30 m height	BM-30-14 14,50 m ³ - 8,7 ton 6,10 m height	BM-40-18 18,00 m ³ - 10,8 ton 6,95 m height	BM-50-21 21,50 m ³ - 12,9 ton 7,80 m height	BM-60-25 25,00 m ³ - 15,0 ton 8,70 m height
---	--	--	---	---	---

**2,00 meter
Diameter
67° Cone**



BM-10-04 4,90 m ³ - 3,0 ton 4,00 m height	BM-20-07 7,30 m ³ - 8,3 ton 4,85 m height	BM-30-09 9,70 m ³ - 5,8 ton 5,70 m height	BM-40-12 12,10 m ³ - 7,30 ton 6,55 m height	BM-50-14 14,50 m ³ - 8,70 ton 7,40 m height	BM-60-16 16,90 m ³ - 10,1 ton 8,25 m height
---	---	---	---	---	---